

**Kaleidoscope of Swiss Cartography**

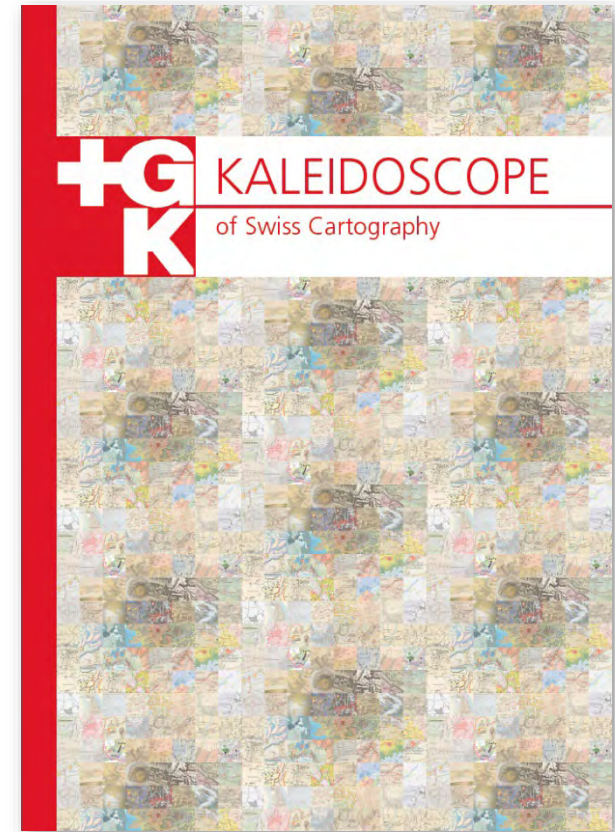
# **Mountain Maps around the Globe**

based on

Kaleidoscope of Swiss Cartography,  
Swiss Society of Cartography, 2019

Stefan Rüber, ETH Zurich,  
Institute of Cartography and Geoinformation

12<sup>th</sup> Mountain Cartography Workshop,  
Snow Mountain Ranch, Colorado, USA







NORTH PEAK  
19,470

MOUNT MCKINLEY  
18,230

SOUTH PEAK  
18,960

West Buttress  
17,230

Denali Pass  
18,200

The Archdeacon's Tower  
19,650

Furthing Horn  
20,125

Kahiltna Horn  
20,320

Carter Horn  
20,220

Windy Corner  
13,350

Thayer Basin

East Buttress  
14,630

Fork Kahiltna Glacier

Harper Glacier

Browne Tower  
14,600

9000

13,540

16,620

18,990

17,390

17,425

18,705

15,720

12,960

13,710

11,960

15,570

15,640

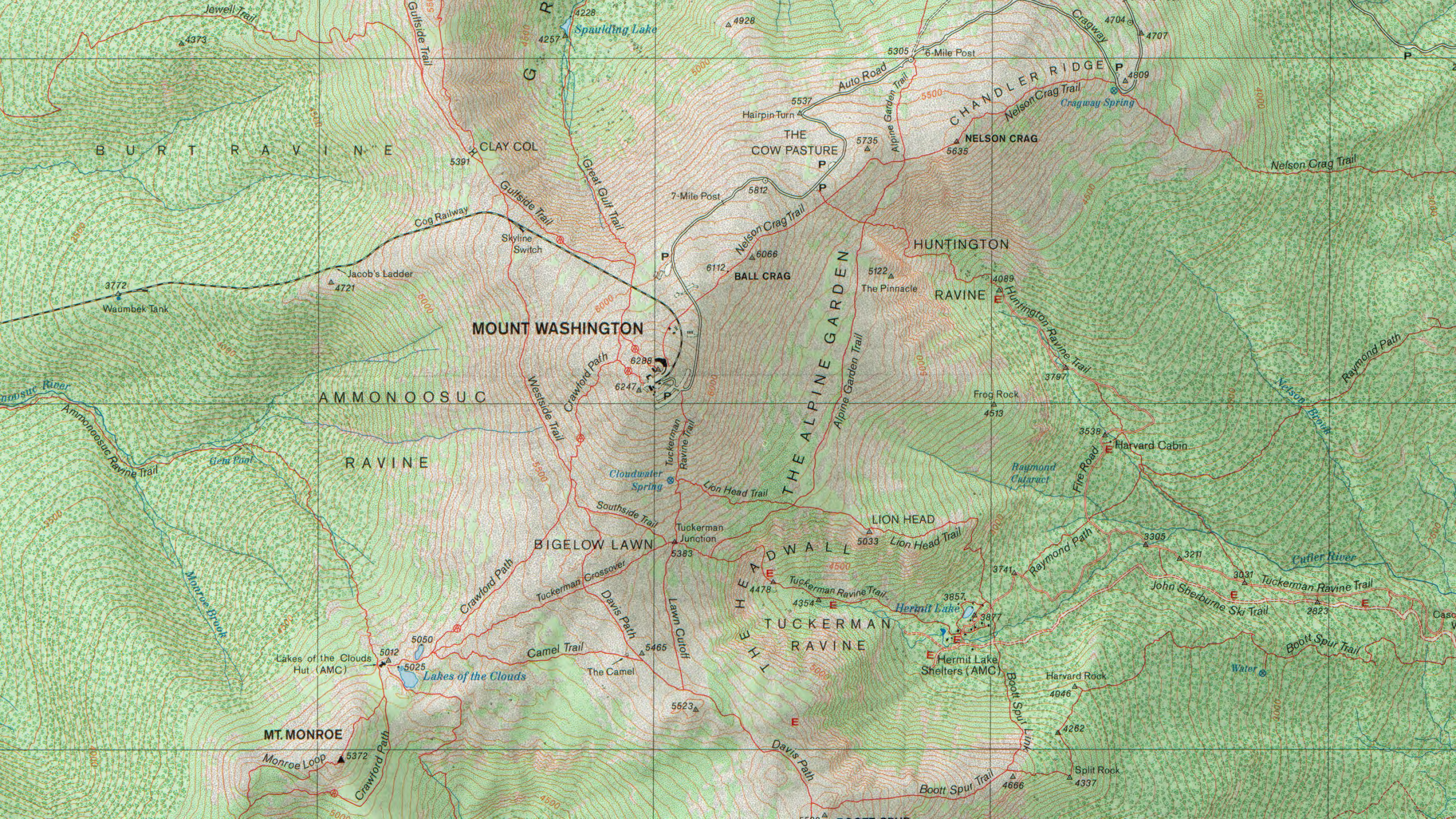
14,550

14,630

14,730

8000





**MOUNT WASHINGTON**

**HUNTINGTON RAVINE**

**AMMONOOSUC RAVINE**

**BIGELOW LAWN**

**THE ALPINE GARDEN**

**MT. MONROE**

**HERMIT LAKE SHELTERS (AMC)**

**LAKES OF THE CLOUDS HUT (AMC)**

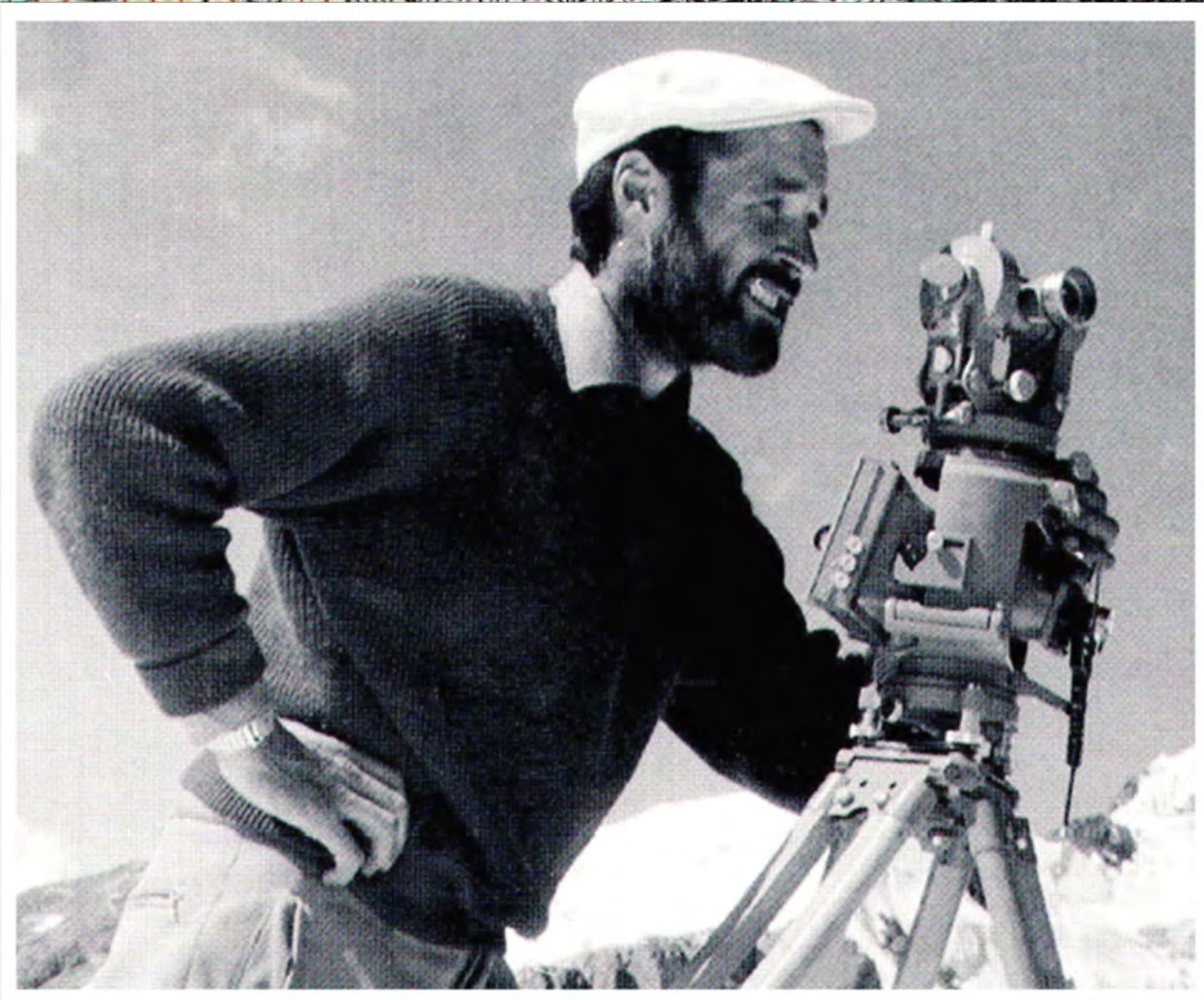
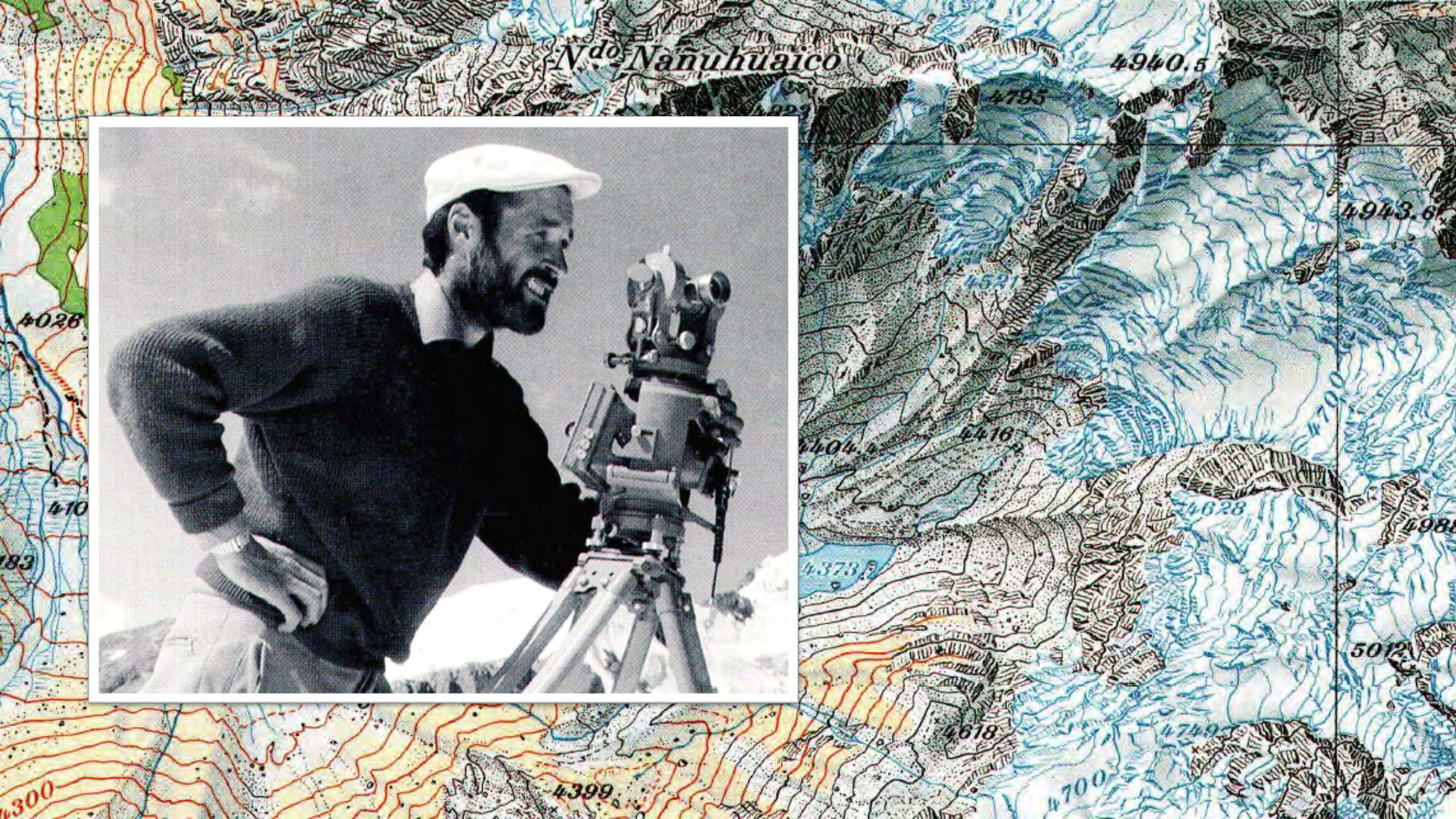
**HERMIT LAKE SHELTERS (AMC)**



29	28		20		21	22
		19	17	18		
						
			21			

**EDEN**  
 in  
 VIRGINIA  
 Von  
 der Helvetischen Societät  
 sel. Enkayste 33400.  
 nach alten Landt  
 A. 1736







*Panta o Cha*





# UN SUIZO ORIENTA A LOS LIMEÑOS

**S**abía Ud. que Lima es cruzada como un tablero de damas por un centenar de líneas de ómnibus? ... ¿O qué en nuestra capital hay más de 120 líneas de microbuses?

Seguramente que no. Pero el conocimiento acerca de este febril movimiento vehicular es fruto del trabajo de ... un suizo, Oliver Perrottet, afincado desde hace cuatro años en el Perú y que conoce el tránsito metropolitano mejor que cualquier limeño.

Perrottet, 27 años de edad y casado con peruana, demoró algo más de tres años para elaborar un organigrama con todos los recorridos del transporte colectivo.

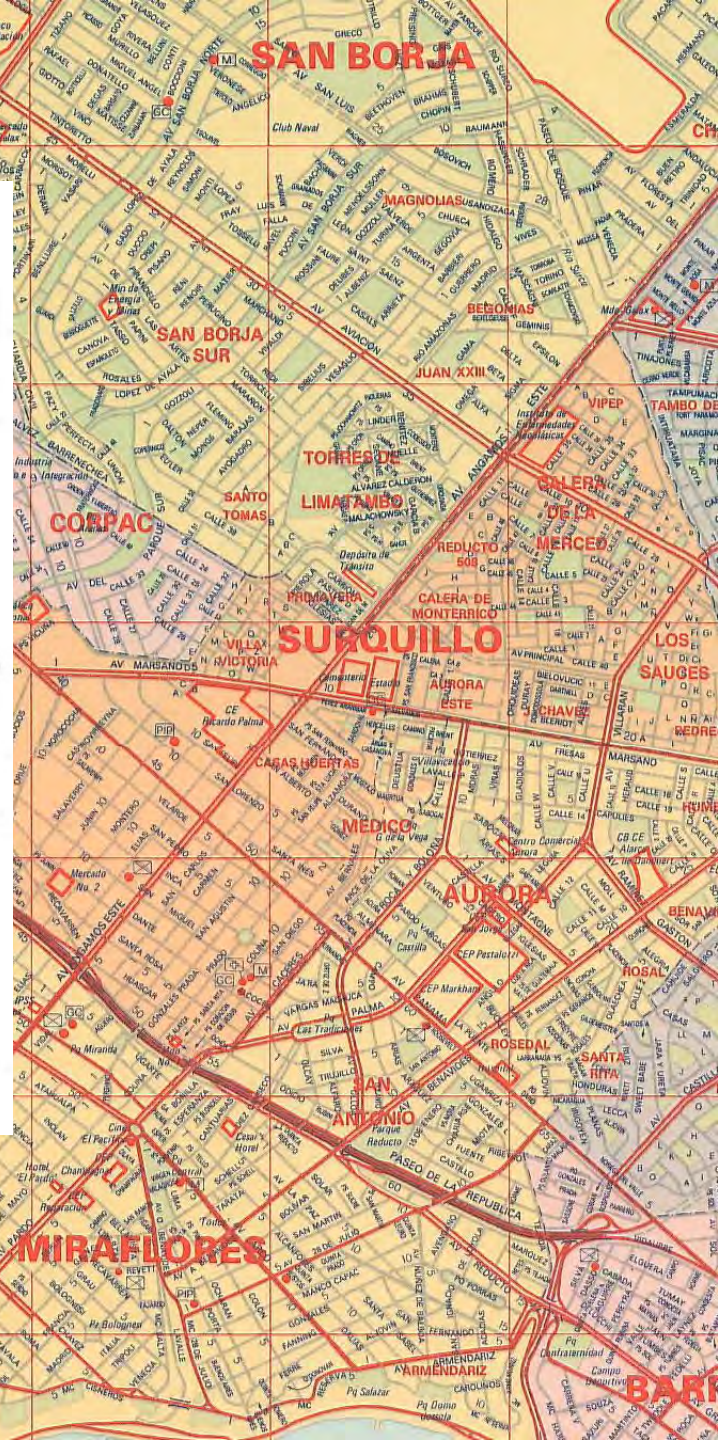
Para ello, tuvo que viajar diariamente en ómnibus y microbuses, desde los paraderos iniciales hasta los terminales. Así es que conoció

todos los itinerarios, paraderos principales y recorrido completo.

Todos sus apuntes los ha volcado en una Guía de Transportes de Lima Metropolitana, en la cual se señalan, con toda precisión —como buen suizo que es— la numeración de las líneas, lugares que recorre, paraderos en zonas accesibles y ... hasta el color de los microbuses.

Perrottet, con el innumerable material que obtuvo de sus viajes por toda la ciudad, ha proporcionado datos a las autoridades de tránsito y a la Comisión del Metro, como una colaboración especial.

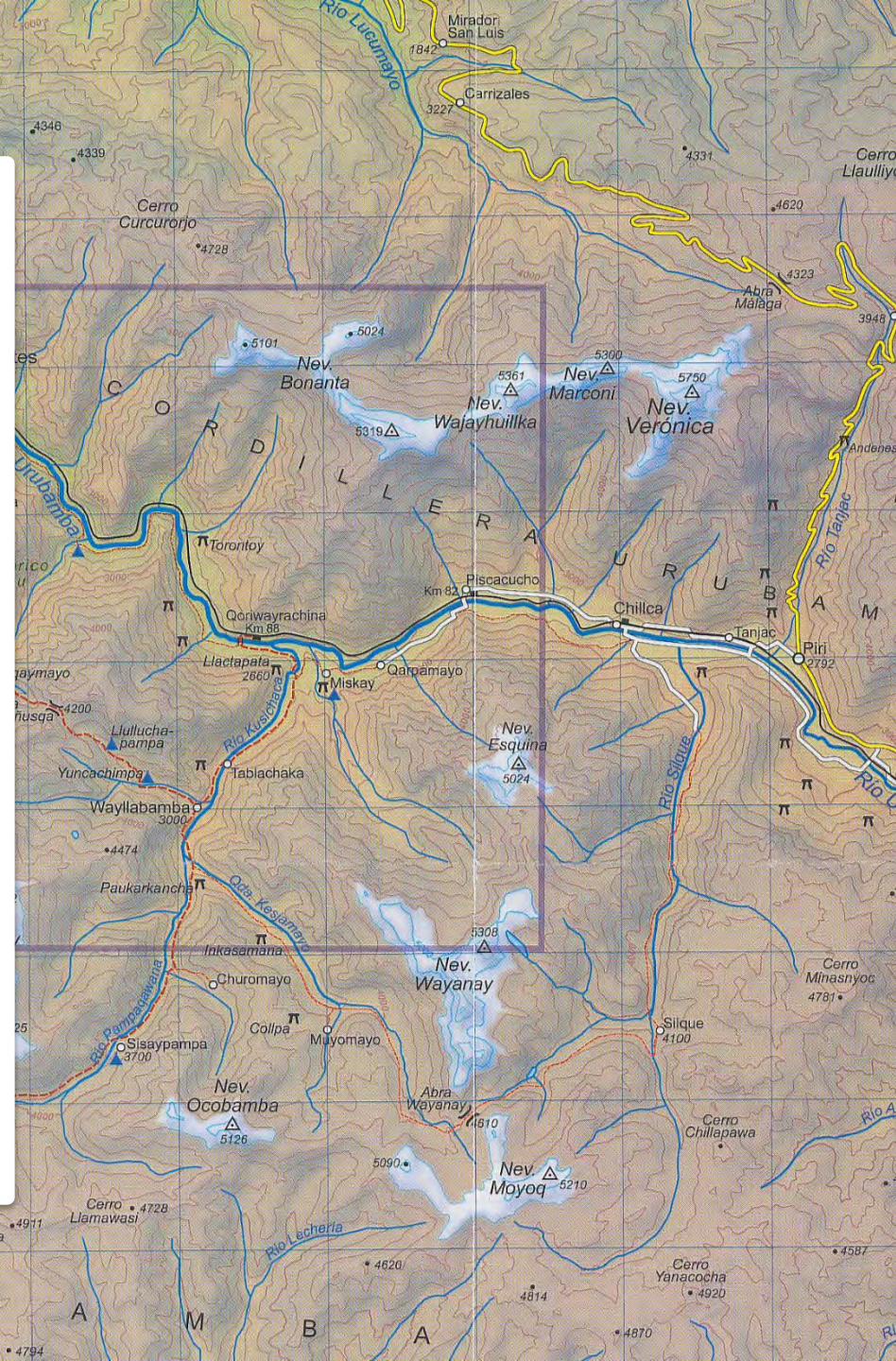
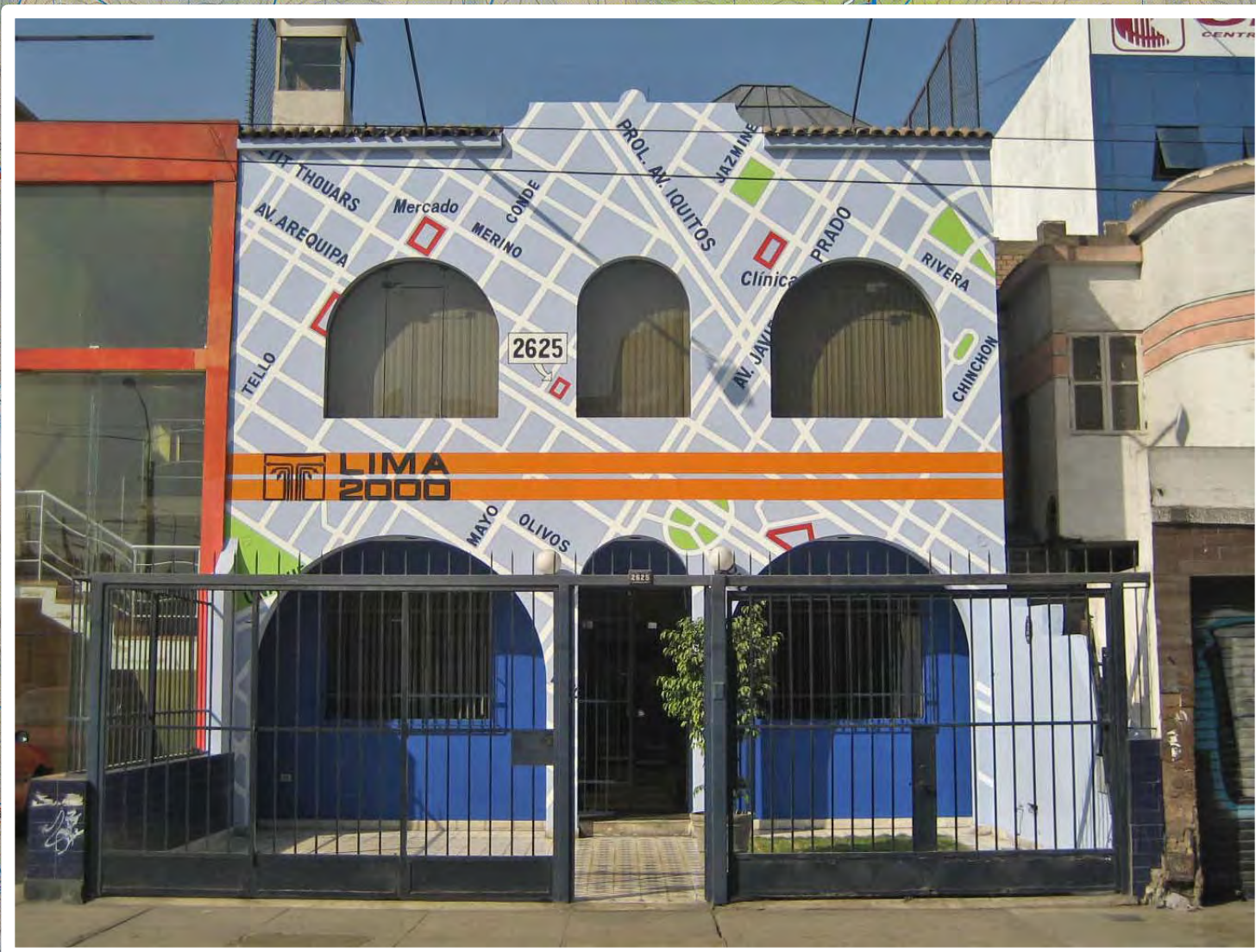
Su obra la ha puesto a disposición del público para que esté al tanto del movimiento vehicular y logre orientarse sin problemas. En la Guía se incluye también la ubicación de los lugares de mayor importancia de la ciudad.

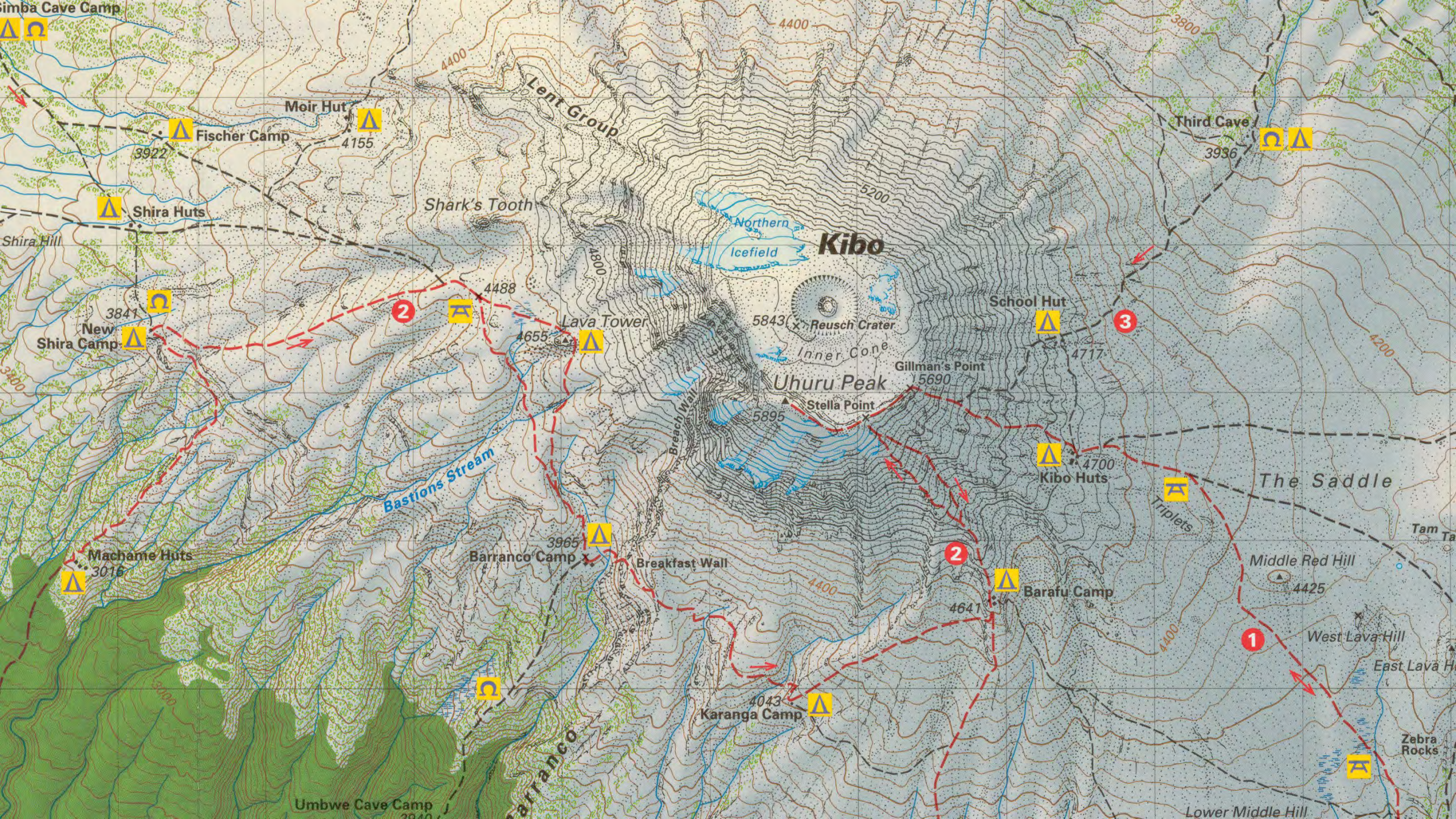


*Perrottet y su mapa de tránsito, que lo mantuvo atareado varios años*

LA IMAGEN, Domingo 9 de Mayo de 1976







CLIMBING AND TREKKING MAP 1:80'000

# KILIMANJARO

## KIBO

English, Deutsch  
GPS compatible

Topographic Map 1:80'000  
Overview Map 1:1'500'000  
Moshi and Arusha City Maps

Climbing Routes  
Trekking Profiles  
Vegetation Profile

www.CLIMBING-MAP.com

CLIMBING AND TREKKING MAP 1:40'000

# CERRO ACONCAGUA

english, deutsch, español, français

GPS compatible

Topographic Map 1:40'000  
Trekking Map 1:150'000  
Mendoza City Map

Climbing Routes  
Trekking Profiles  
Panorama View

www.CLIMBING-MAP.com

CLIMBING AND TREKKING MAP 1:40'000

# COTORAXI

english, español, deutsch  
GPS compatible

Topographic Map 1:40'000  
Overview Map 1:250'000  
Quito City Map

Climbing Routes  
Vegetation Profile  
Avenida de los Volcanes

www.CLIMBING-MAP.com

CLIMBING AND TREKKING MAP 1:50'000

# ELBRUS ЭЛЬБРУС

english, deutsch, на русском  
GPS compatible

Climbing Routes  
Trekking Profile  
Panorama View Map

Topographic Map 1:50'000  
Overview Map 1:670'000  
Terstal and Chaget Village Maps

Английский, немецкий, русский языки  
Поддержка формата маршрута в PDF  
Карта высотных слоев

Топографическая карта 1:50'000  
Обзорная карта 1:670'000  
Карта поселков Терстал и Чагет

www.CLIMBING-MAP.com

TREKKING AND TOURIST MAP 1:50'000

# CUBA

## PICO TURQUINO

english, español, deutsch

Chronological table  
History of the Revolution

Topographic Map 1:50'000  
Overview Map 1:1 Mio.  
City Maps: Havana / Santiago / Bayamo

www.CLIMBING-MAP.com

CLIMBING AND TREKKING MAP 1:25'000

# Island Peak

english, deutsch

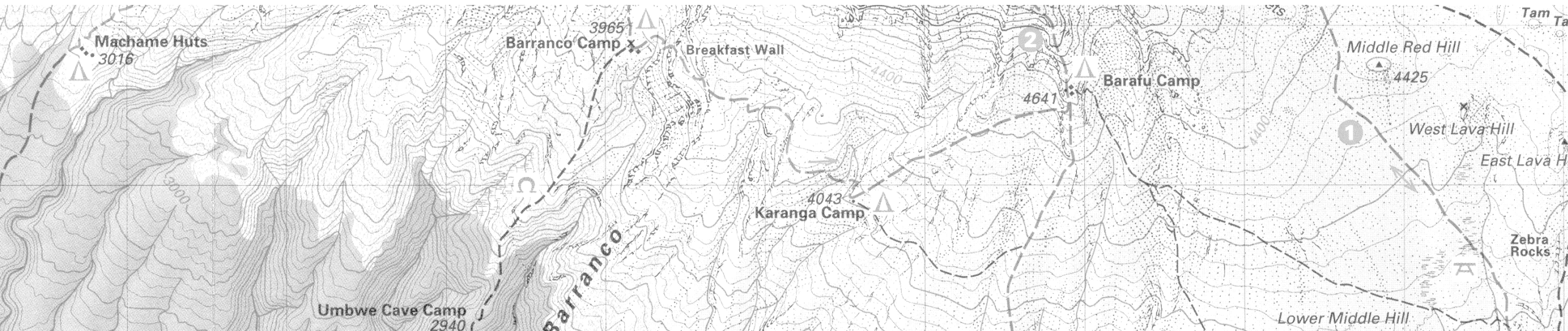
GPS compatible

Khumbu Overview Map 1:250'000  
Topographic Maps 1:25'000  
Nemcho Bazar and Lukla Village Maps

# Mera Peak

english, deutsch

www.CLIMBING-MAP.com





Chukhung Ri  
5470

Island Peak  
Imja Tse  
6189

Sagarmatha-

Chukhung

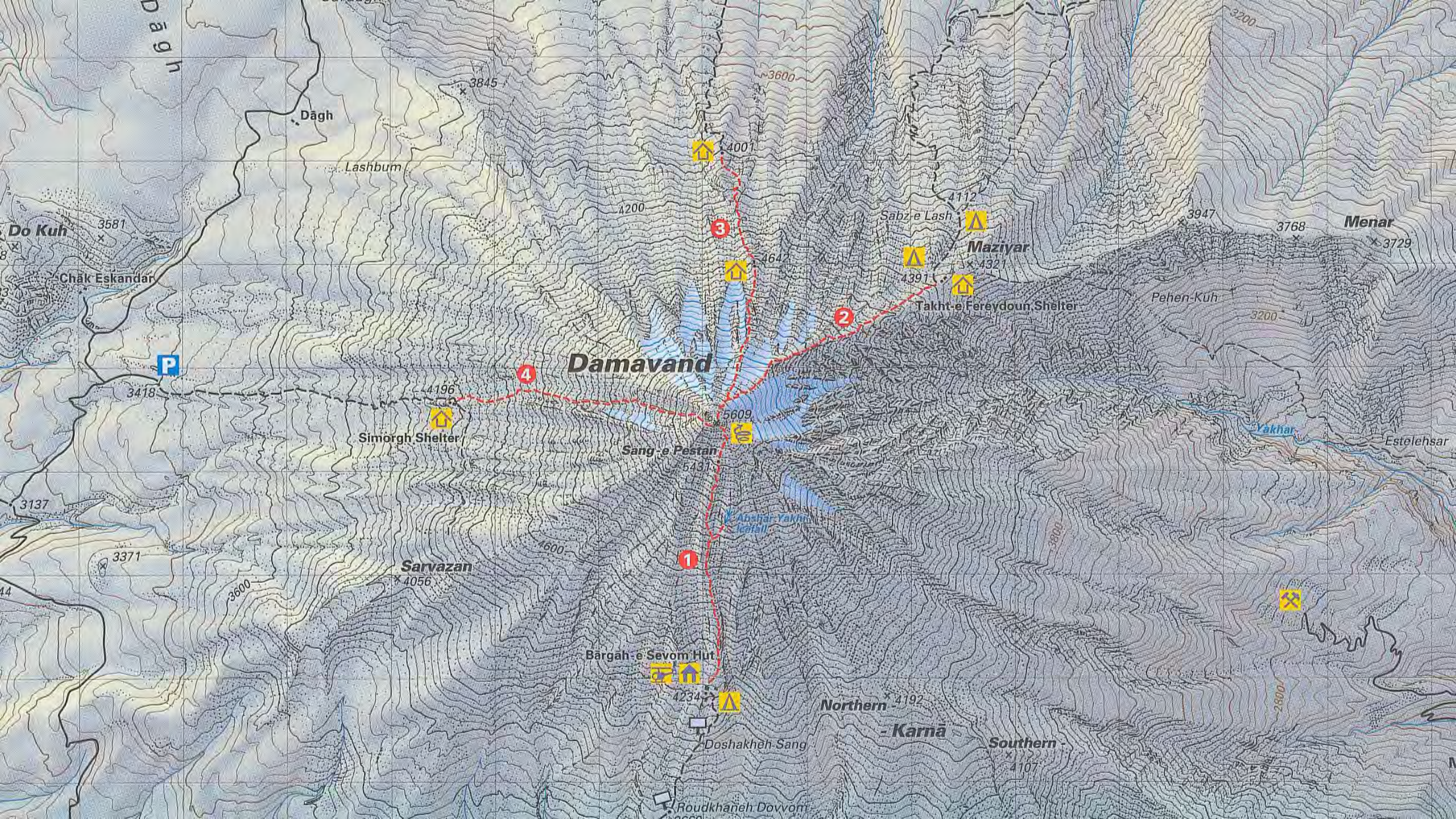
Parashaya Gyab

Base Camp

Imja Lake

Sagarmatha National Park

Imja Lake



# Damavand

1

2

3

4

Simorgh Shelter

Sang-e Pestan

Bargah-e Sevom Hut

Maziyar

Takht-e Fereydoun Shelter

Northern Kamā

Southern Kamā

Chak Eskandar

P

Dāgh

Lashbum

Do Kuh

Menar

Pehen-Kuh

Estelhsar

Yakhar

Roudkhaneh Dovom

3845

3600

4001

4112

3947

3768

3729

3581

4200

4647

4391

5200

3418

4196

5609

5431

3137

3371

Sarvazan

4056

4600

4234

4192

4107

2800

2800



CLIMBING AND TREKKING MAP 1:50'000

# DAMAVAND

English, Deutsch, فارسی

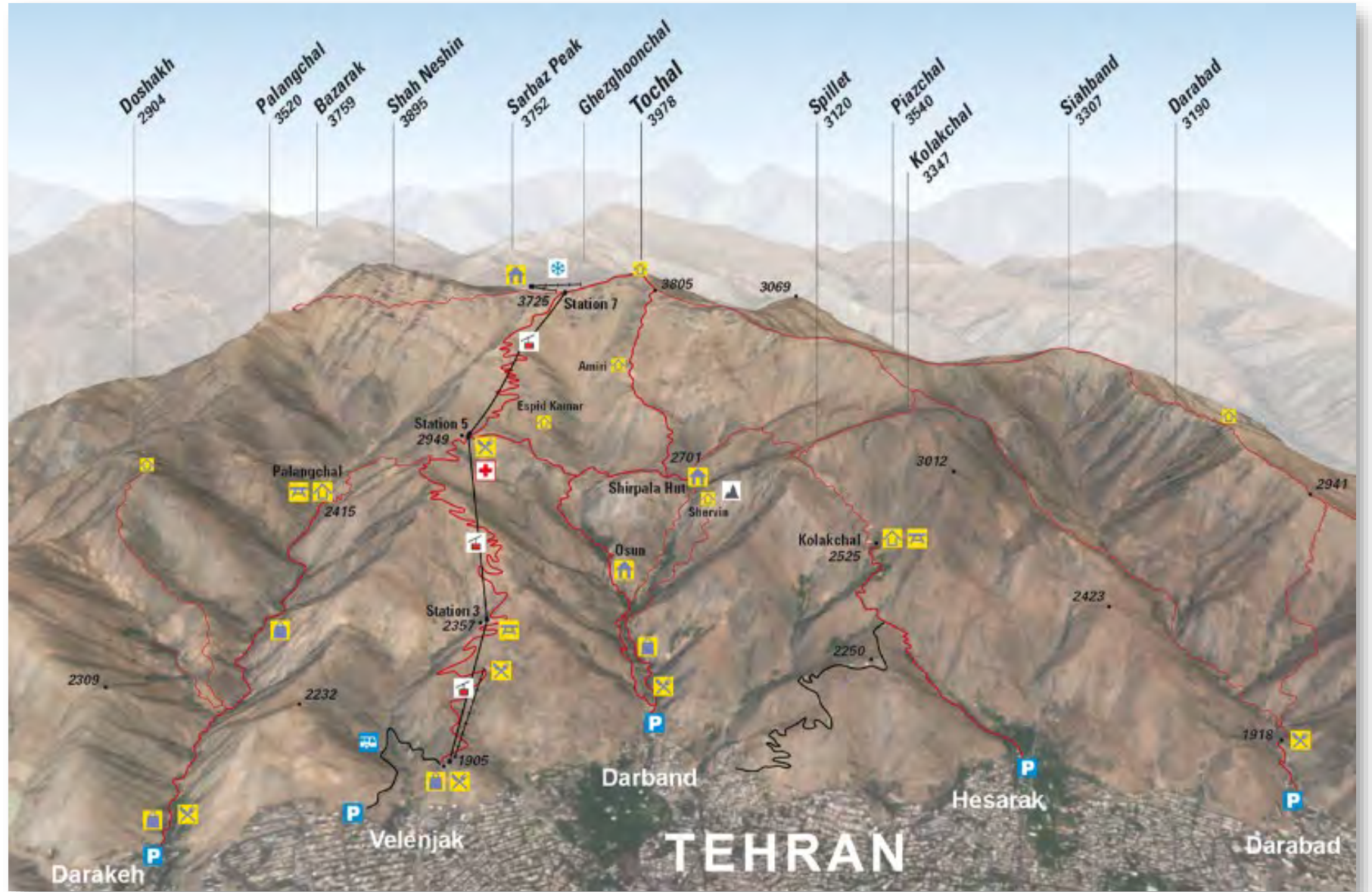
Damavand Map 1:50'000  
Alam Kuh Map 1:100'000  
Tochal 3D View

Climbing Routes and Topos  
Vegetation of the Alborz Mountains  
Panoramic Overview Map

نقشه دماوند ۱:۵۰'۰۰۰  
نقشه علم کوه ۱:۱۰۰'۰۰۰  
ویو (نمای) سه بندی توچال  
مسیر صعود صخره و توپوز  
فلور (گیاهان) کوههای البرز  
نقشه کنی پانوراما



www.CLIMBING-MAP.COM



CLIMBING AND TREKKING MAP 1:50'000

# DAMAVAND

English, Deutsch, فارسی

Damavand Map 1:50'000  
Alam Kuh Map 1:100'000  
Tochal 3D View  
Climbing Routes and Topos  
Vegetation of the Alborz Mountains  
Panoramic Overview Map

نقشه دماوند ۱:۵۰'۰۰۰  
نقشه علم کوه ۱:۱۰۰'۰۰۰  
ویو (نمای) سه بندی توچال  
مسیر صعود صخره و توپوز  
فلور (گیاهان) کوههای البرز  
نقشه کلی پانوراما

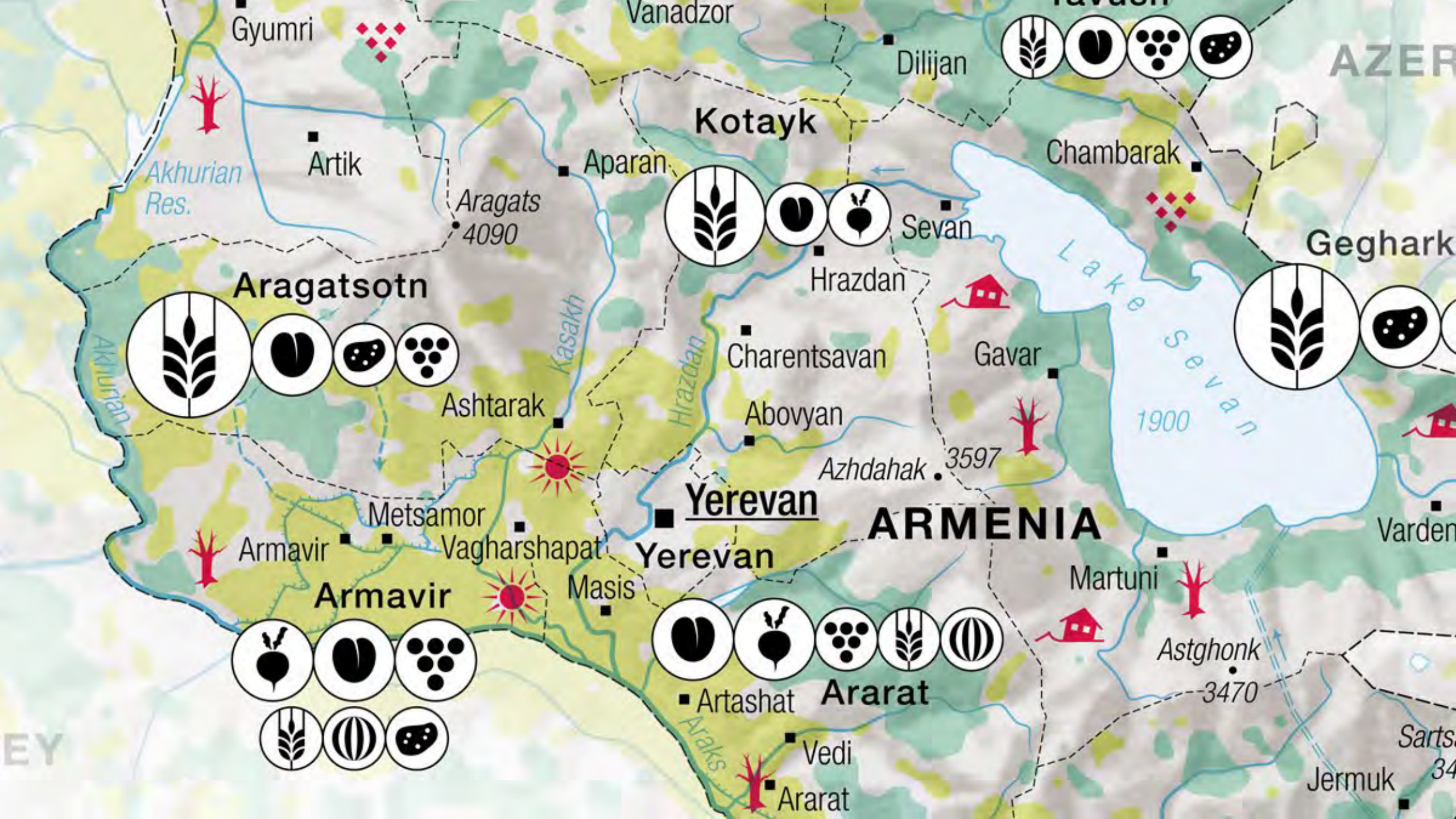


www.CLIMBING-MAP.COM

## North face / سمت شمال

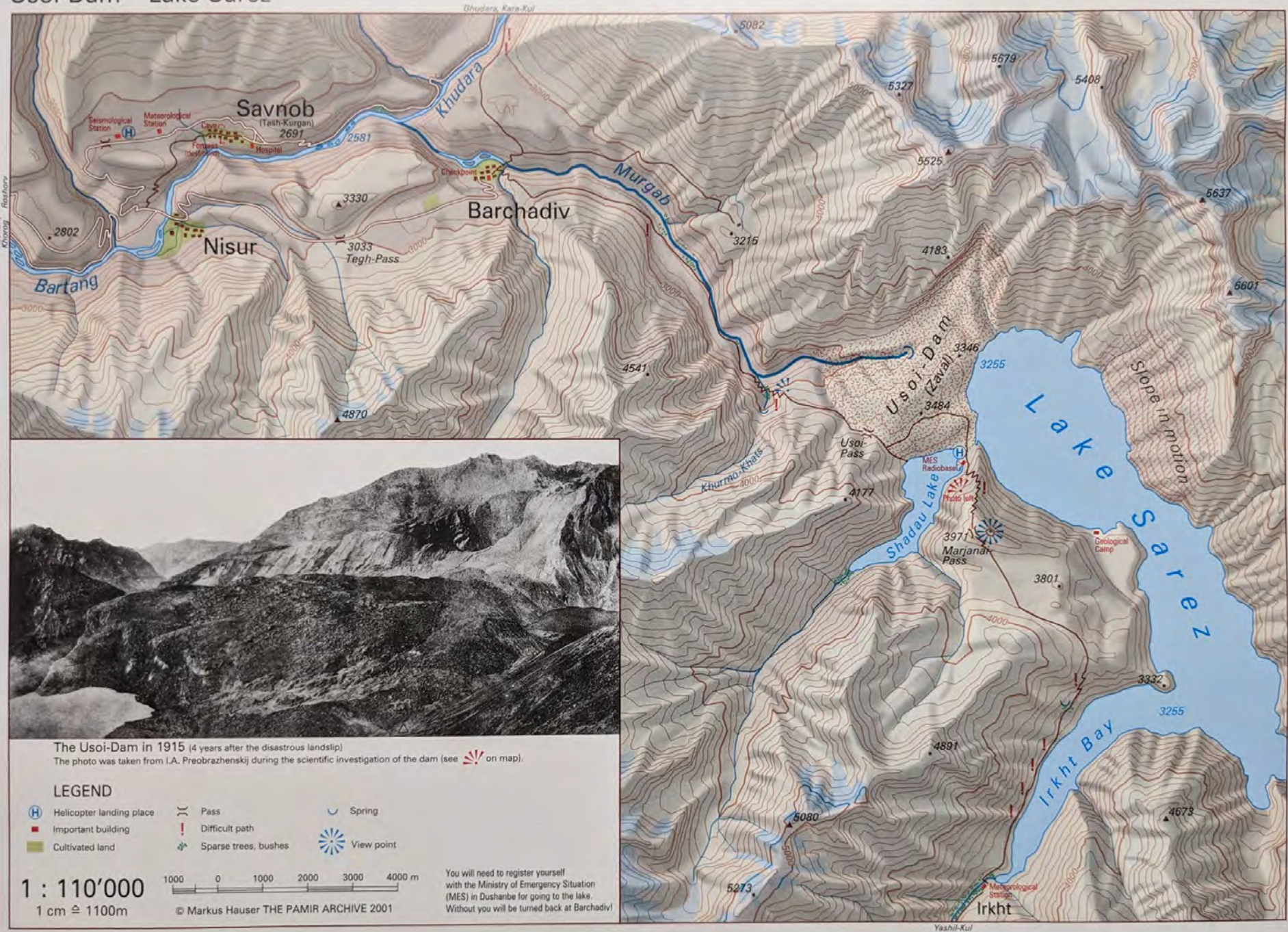








# Usoi-Dam • Lake Sarez

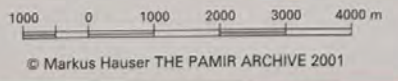


The Usoi-Dam in 1915 (4 years after the disastrous landslide)  
 The photo was taken from I.A. Preobrazhenskij during the scientific investigation of the dam (see 📷 on map).

## LEGEND

- 🚁 Helicopter landing place
- 🏠 Important building
- 🌿 Cultivated land
- ⌋ Pass
- 🛤️ Difficult path
- 🌲 Sparse trees, bushes
- 🌊 Spring
- 👁️ View point

1 : 110'000  
 1 cm ≅ 1100m



You will need to register yourself with the Ministry of Emergency Situation (MES) in Dushanbe for going to the lake. Without you will be turned back at Barchadiv!

© Markus Hauser THE PAMIR ARCHIVE 2001







Koku. Districtus. LXVII.  
 Kio. Urbes, plus. 13000.  
 Mura. Paguli. 909858.  
 Castella. 146.  
 Sinjae Temples. 27700.  
 Budsye Temples. 22560.

Viro Perillustri  
 Dno HANS SLOANE, Baronetto,  
 Collegii Medicorum Londinensis et Societatis  
 Regiae Praesidi, Copiarum Britannicarum  
 Archiatro, Regiae Scientiarum Academiae  
 Parisiensis Sodali, &c.  
 Hanc Japonici Imperii Tabulam,  
 In grati animi monumentum.  
 Cum et maxima ab ipso in me collata beneficia,  
 tum quod Res Japonicas suo Museo aservatas  
 ad illustrandam Japonum Historiam benevole  
 communiverit.  
 lubers meritoque Sacram esse voluit. J.C. SCHEVCHZER.



Tolsitoku, Fortune Deus, apud Japonos.



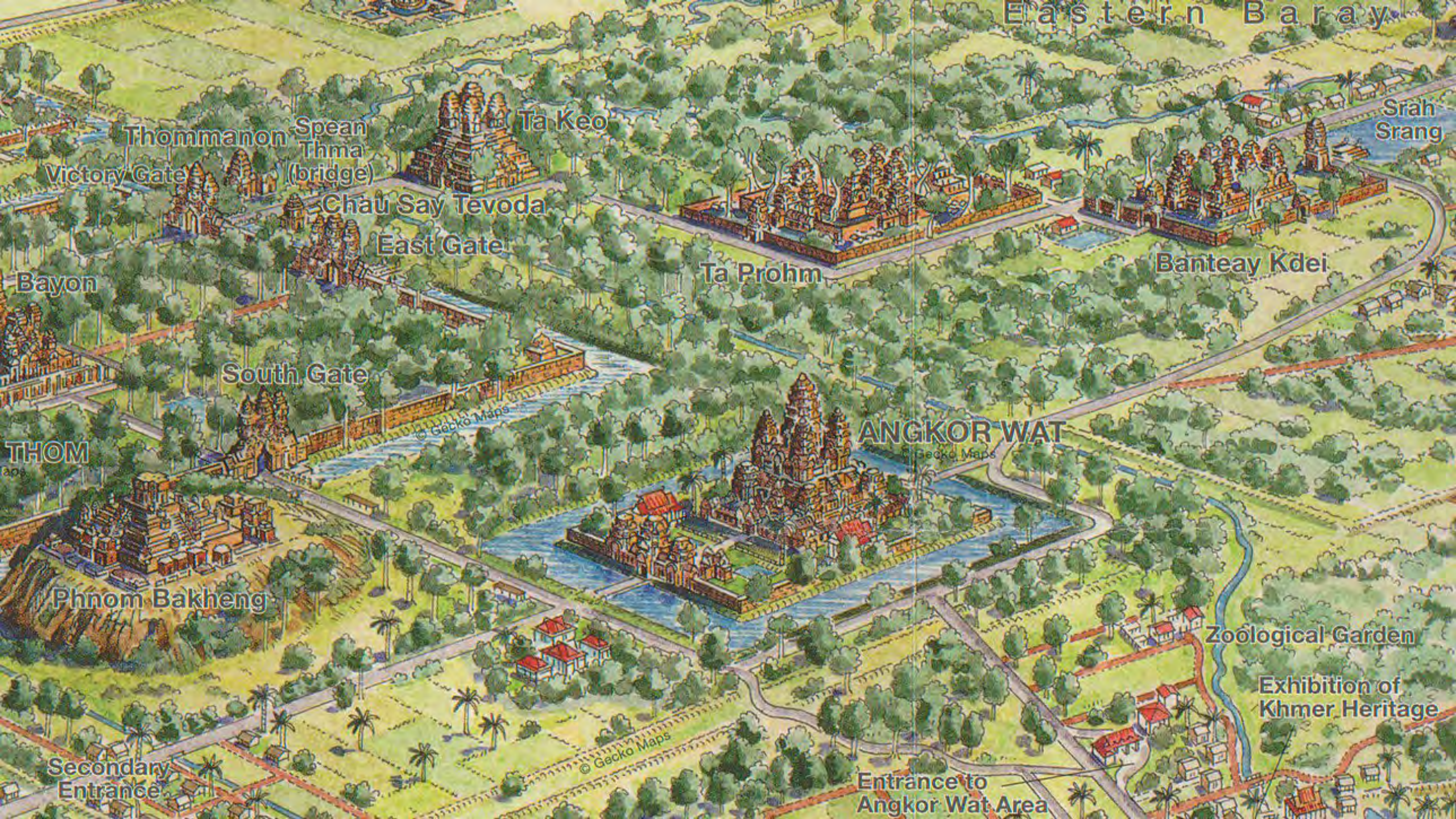
Tai, Piscis, Napturus Japonum.



Daikoku, Divitiarum Deus.

Seodasju Secte Ro  
 Sarum  
 Senjus Secte Avarium  
 Rosarium, Kitemanben dactum  
 Sate & Saporago Commune  
 Chorui Secte Rosarium  
 Dsjusu sive saria Japonum





Eastern Barray

Srah Srang

Ta Keo

Spean Thma (bridge)

Chau Say Tevoda

East Gate

Ta Prohm

Banteay Kdei

Thommanon  
Victory Gate

Bayon

South Gate

ANGKOR WAT

THOM

Phnom Bakheng

Zoological Garden

Exhibition of Khmer Heritage

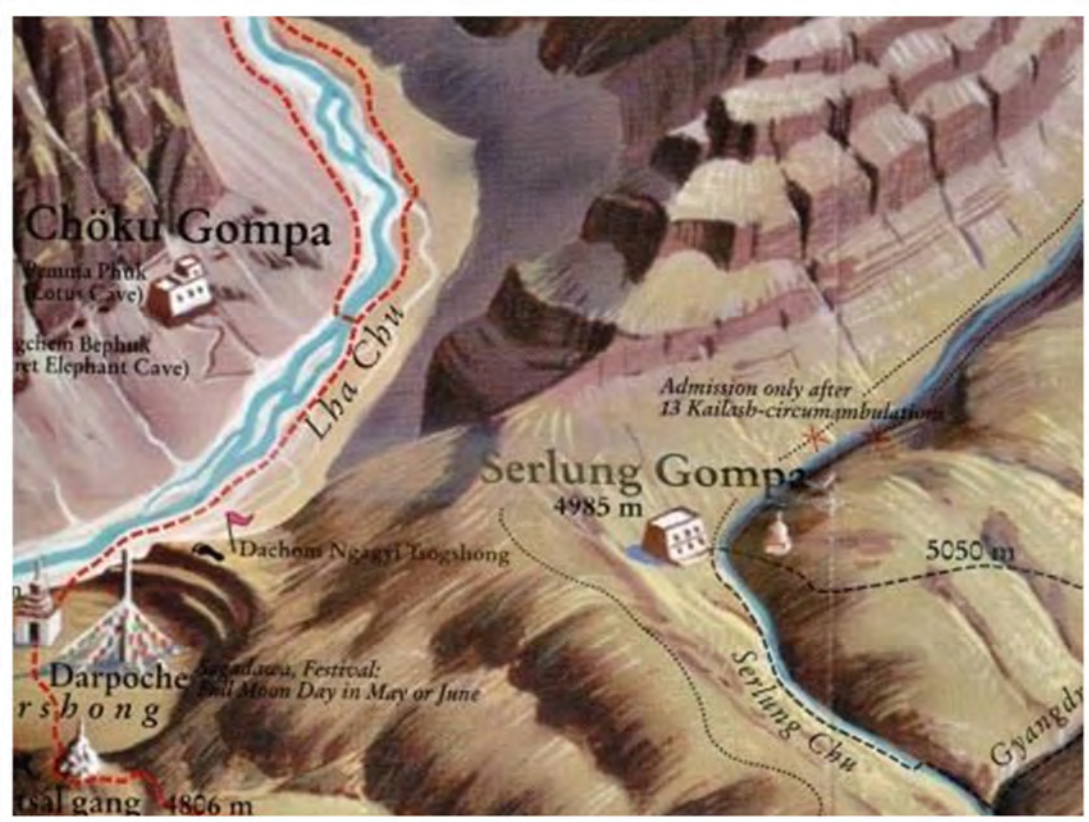
Secondary Entrance

Entrance to Angkor Wat Area

© Gecko Maps

© Gecko Maps

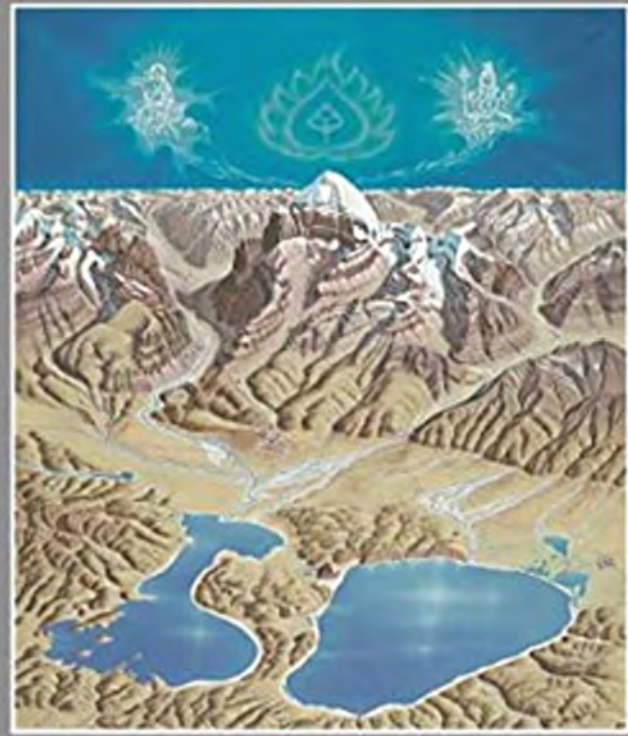
© Gecko Maps



Prohm

TIBET  
**KAILASH**

གངས་རིན་པོ་ཆེ།



Entrance to Angkor Wat Area

Srah Srang

Garden

on of Heritage

Victo

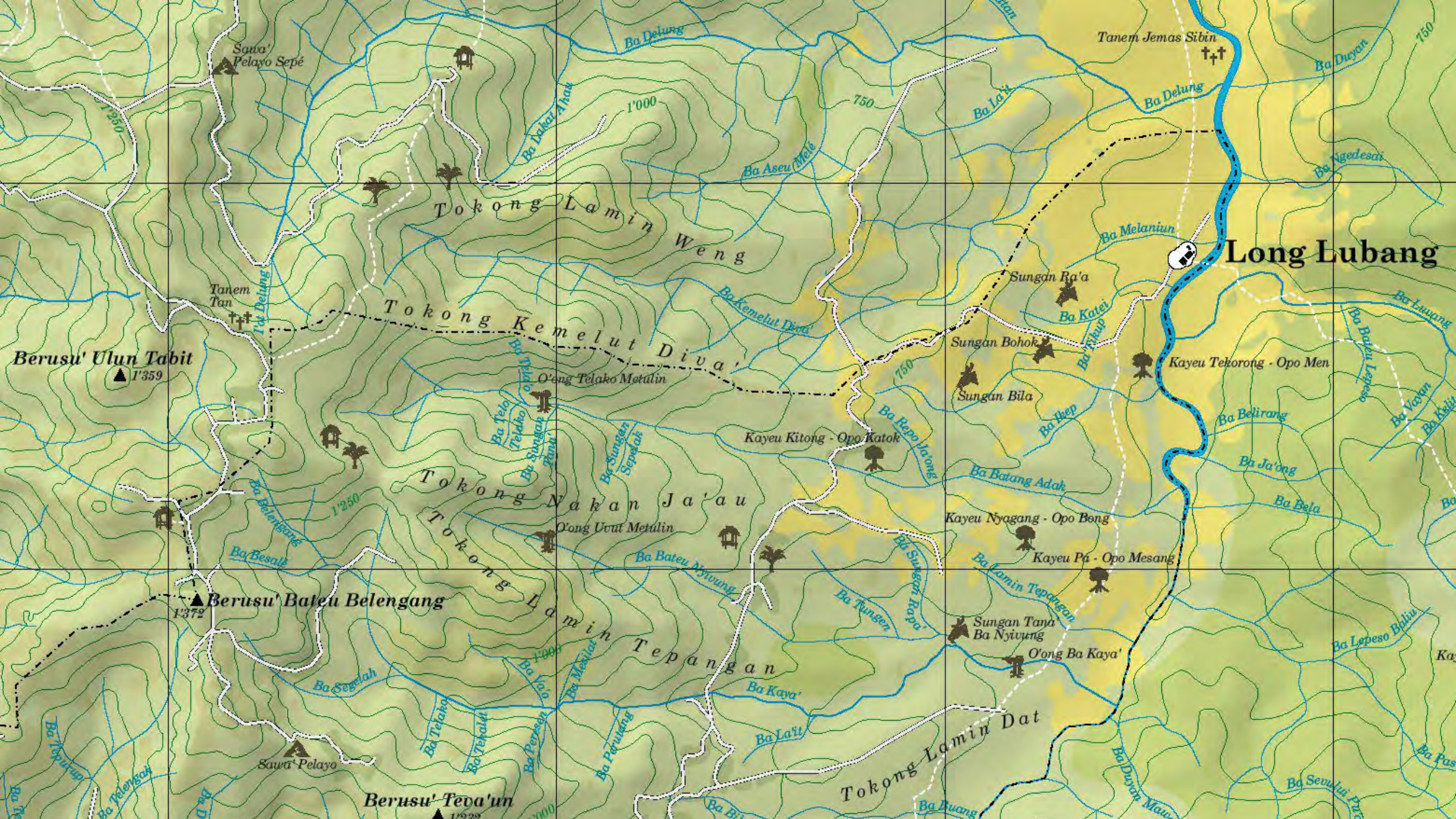
Bayon

THOM

Phnom Bakheng

Secondary Entrance

© Gecko Maps



Sawa' Pelayo Sepé

Tanem Jemas Sibin

Tokong Lamin Weng

Long Lubang

Berusu' Ulun Tabit

Tokong Kemelut Diva'

Berusu' Bateu Belengang

Tokong Nakan Ja'au

Berusu' Teva'un

Tokong Lamin Tepangan

Tokong Lamin Dat

750

1'000

750

1'250

1372

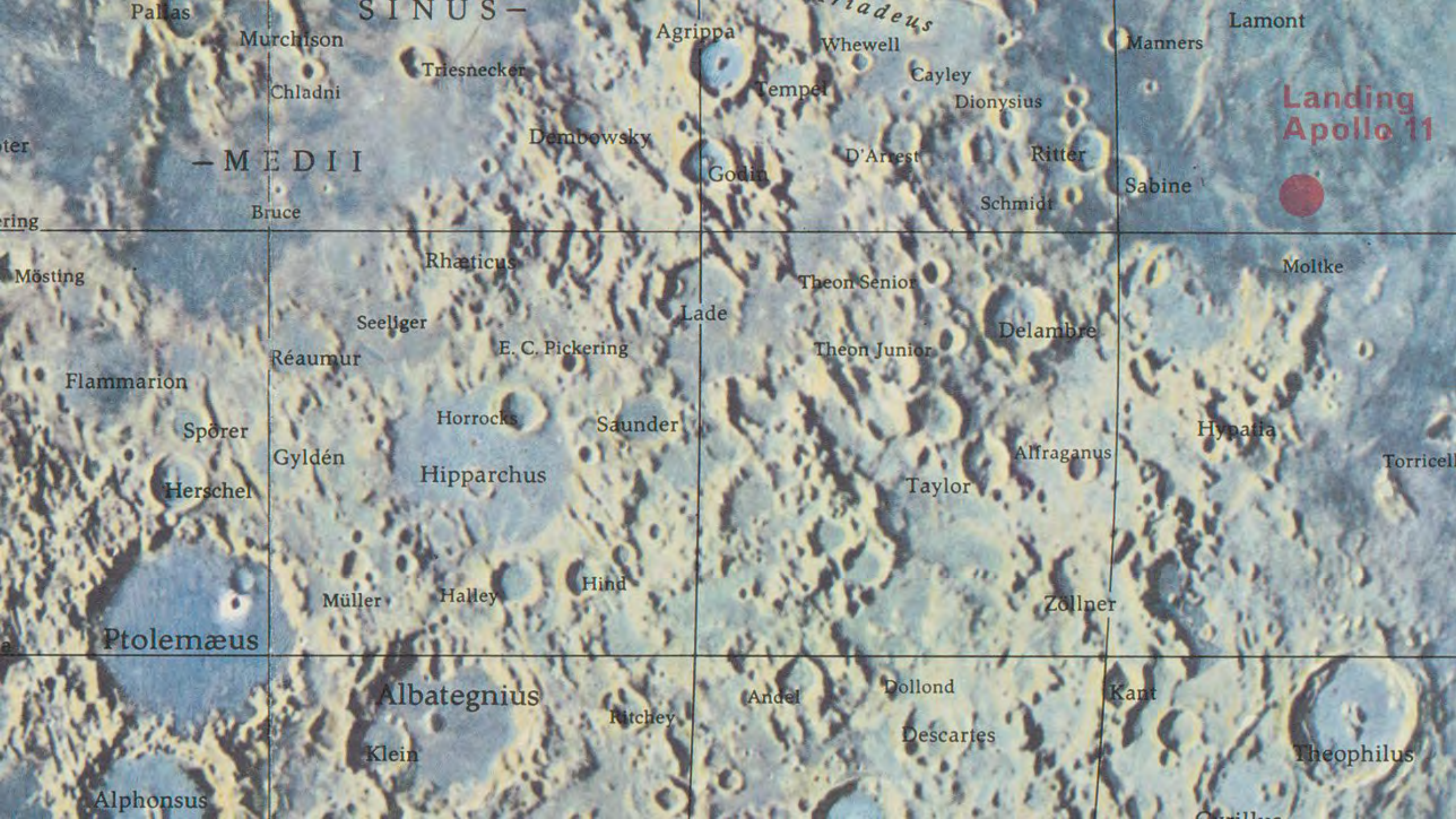
1'000

1'000









Landing  
Apollo 11



SINUS -  
- MEDII

Albatagnius

Theophilus

Alphonsus

Klein

Descartes

Kant

Ritchey

Andel

Dollond

Ptolemæus

Zöllner

Hind

Müller

Halley

Hipparchus

Taylor

Alfraganus

Hypatia

Saunder

E. C. Pickering

Theon Junior

Delambre

Moltke

Seellger

Theon Senior

Lade

Rhaeticus

Mösting

Réaumur

Flammariion

Spörer

Gylden

Horrocks

Herschel

Bruce

Schmidt

Sabine

Godin

D'Arrest

Ritter

Dembowsky

Tempel

Cayley

Dionysius

Murchison

Agrippa

Whewell

Manners

Lamont

Triesnecker

Chladni

Pallas



Thank you

# References

- Kaleidoscope of Swiss Cartography  
[doi.org/10.3929/ethz-b-000350152](https://doi.org/10.3929/ethz-b-000350152)
- How Mount Everest came to Wabern  
[swisstopo.admin.ch/en](https://swisstopo.admin.ch/en)
- Mount Everest  
[reliefshading.com/examples/mt-everest](https://reliefshading.com/examples/mt-everest)
- The Panta Map by the Swiss Alpine Club expedition to the Cordillera Vilcabamba (Peru)  
[kartengeschichte.ch/ch/summaries/e28c.html](https://kartengeschichte.ch/ch/summaries/e28c.html)
- Panta  
[reliefshading.com/examples/panta](https://reliefshading.com/examples/panta)
- Lima2000  
[lima2000.com](https://lima2000.com)
- [www.climbing-map.com](https://www.climbing-map.com)  
[climbing-map.com/en](https://climbing-map.com/en)
- Matthias Beilstein Kartographie  
[beilstein.biz/home-en](https://beilstein.biz/home-en)
- Rohweder Panorama  
[rohwerder-map-design.com](https://rohwerder-map-design.com)
- Gecko Maps – Publisher  
[freytagberndt.com/en/verlage/gecko-maps](https://freytagberndt.com/en/verlage/gecko-maps)
- Academia – Markus Hauser  
[independent.academia.edu/MarkusHauser](https://independent.academia.edu/MarkusHauser)
- In the Heart of the Pamir  
[pamir-adventure.com/pamirmountains](https://pamir-adventure.com/pamirmountains)
- National Report – Cartography in Switzerland 2015–2019  
Asahi-dake Hiking Map (Cover and page 78)  
[doi.org/10.3929/ethz-b-000350168](https://doi.org/10.3929/ethz-b-000350168)
- Bruno Manser Fonds – Mapping and Cultural Documentation  
[bmf.ch/en/projects/kartierung-der-penan-regenwalder-6](https://bmf.ch/en/projects/kartierung-der-penan-regenwalder-6)
- Winfried Kettler Panorama-Studio  
[kettler-panorama.ch](https://kettler-panorama.ch)

*All websites retrieved on June 7, 2023*